

New Documentation Landing Page (Authenticated)

- Jerry Smotherman and Jeff Gajda
- 05-23-2017

New Documentation Landing Page - Authenticated

- Welcome Page
 - My Open/Entitled Products
 - Most Accessed Products
- Product/Solution Page
 - Create Custom Downloadable Collection
 - Email sent to customer when downloadable collection is available
 - PDF Advanced Search indexes contents of all files within a directory
- One-Click Filter Feature
- Search Hints
- Dynamic Filtering
- Improved Sort Feature
- Topic Finder
- Catalog Categories
- Helpful Hints

Welcome Page

Alcatel-Lucent Documentation Center

List Products by: My Open/Entitled All (A-Z) Most Accessed Category

My Open/Entitled

- 3600 MainStreet Multiservice Bandwidth Manager
- 3612 MainStreet NBM (Narrowband Multiplexer)
- 3624 MainStreet ICB (Intelligent T1 Channel Bank)
- 3630 MainStreet PRM (Primary Rate Multiplexer)
- 5521 PC EMP (PC-based Element Manager Platform)
- 5620 AIM (Analysis and Inventory Module)
- 5620 CMIP OSS Interface Module
- 5620 CORBA OSS Interface Module
- 5620 DSL Network Manager
- 5620 NM (Network Manager)
- 5620 SAM (Service Aware Manager)
- 5620 SNMP DM (SNMP Descriptor Module)
- 5650 CPAM (Control Plane Assurance Manager)
- 5670 RAM (Reporting and Analysis Manager)
- 5750 SSC (Subscriber Services Controller)
- 7210 SAS (Service Access Switch)
- 7250 SAS (Service Access Switch)
- 7270 MSC (Multiservice Concentrator)
- 7450 ESS (Ethernet Service Switch)
- 7470 MSP (Multiservice Platform)
- 7670 ESE (Edge Services Extender)
- 7670 RSP (Routing Switch Platform)
- 7701 CPAA (Control Plane Assurance Appliance)
- 7705 SAR (Service Aggregation Router)
- 7710 SR (Service Router)

- *My Open/Entitled Products* displayed by default if My Favorite Products not active in OLCS (only applicable for customers, not ALU employees)
- *Product Category* allows customers to search for products such as Optics, Mobile, and Solutions
- List of Products/Solutions includes *at least one* document, except for My Favorite Products, which is obtained from a different database

https://infoproducts.alcatel-lucent.com/aces/cgi-bin/au_doc_welc.pl

Welcome Page

Alcatel-Lucent Documentation Center

List Products by: My Open/Entitled All (A-Z) Most Accessed Category

Most Accessed Products (since Apr 2015)

- 7750 SR (Service Router)
- LTE End-to-End Solution
- IMS Communications
- 5620 SAM (Service Aware Manager)
- 7705 SAR (Service Aggregation Router)
- 7210 SAS (Service Access Switch)
- 7450 ESS (Ethernet Service Switch)
- 1830 PSS-16/32/36 (Photonic Service Switches)
- 9412 eNodeB (Evolved Node B)
- 9926 DBS-LTE (Distributed Base Station for LTE)
- 1350 OMS (Optical Management System)
- MCAS (Modular Convergent Application Server)
- 7950 XRS (eXtensible Routing System)
- 7710 SR (Service Router)
- 8620 SurePay@
- 8650 SDM (Subscriber Data Management)
- 1830 PSS-64 (Photonic Service Switch-64)
- 5420 CTS (Converged Telephony Server)
- 5450 ISC (IP Session Control)
- UMTS/W-CDMA Solutions
- 9471 WMM (Wireless Mobility Manager)
- 7360 ISAM FX (Flexible Multiplexer)
- 7302 ISAM (Intelligent Services Access Manager)
- 1360 COM (Centralized Operations Manager)
- 5420 SCG (Service Continuity Gateway)

- *Most Accessed* bullet displays products based on most downloaded for last 60 to 90 days

- List is sorted based on the *number of document downloads/views* per product/solution (Most Accessed displayed first)

One-Click Filter Feature

Ability to **Add a filter** based on criteria selected from the dropdown menus and display the results with just one click

Additional capability to **Share the filtered results** with other users via email

List Products by: My Favorites All (A-Z) Most Accessed Category Help and Feedback options: ▾

Filters: **Add** Share Manage 5620 SAM (Service Aware Manager), 13.0 R8, Installation ▾

Products: My Favorites (Manage My Favorites)

5620 SAM (Service Aware Manager)
 5ESS® Switch
 7750 SR (Service Router)
 8620 SurePay®
 IMS Communications

Release: 13.0 R8 Model: All Models
 Category: Installation Content Type: All Types
 Search for: (Search Hints) in Full Text **Search**
 Format: All Formats Sort: Issue Date **Reset**

5620 SAM (Service Aware Manager)

2 documents found with the specified criteria. Selected library size = 0.009 GB: (library download available at <1.5GB)

[Create a Downloadable Collection of Filtered Documents](#)

Title	Document	Issue	Issue Date	Format
5620 SAM Release 13.0 R8 5650 CPAM Release 9.0 R8 Installation and Upgrade Guide	3HE 09800 AAAH TQZZA 01	1	May 25, 2016	
5620 SAM Release 13.0 R8 5650 CPAM Release 9.0 R8 Installation and Upgrade Guide	3HE 09796 AAAH TQZZA 01	1	May 25, 2016	

Edit My Favorite Filters

Delete Selected Filters

Cancel

Delete	Filter Name
<input type="checkbox"/>	1830 PSS-32 (Photonic Service Switch-32), 8.0, Installation
<input type="checkbox"/>	4ESS® Switch
<input type="checkbox"/>	5620 SAM (Service Aware Manager), 13.0 R8, Installation
<input checked="" type="checkbox"/>	5ESS® Switch, 5E25.1, 9281 Packet Switch
<input checked="" type="checkbox"/>	5ESS® Switch, 5E26.1, 9281 Packet Switch
<input type="checkbox"/>	7450 ESS (Ethernet Service Switch), 12.0, Installation
<input type="checkbox"/>	8620 SurePay®, 28.19/29.19, SurePay Tariff Studio - STS, Provisioning
<input type="checkbox"/>	LTE End-to-End Solution, LR15.1.L, Installation sorted by Most Accessed, A-Z

Manage option allows users to remove any filters that have already been saved

Product/Solution Page

List Products by: My Favorites All (A-Z) Most Accessed Category Help and Feedback options: ▾

Most Accessed (since Apr 2015)

- 7750 SR (Service Router)
- LTE End-to-End Solution**
- IMS Communications
- 5620 SAM (Service Aware Manager)
- 7705 SAR (Service Aggregation Router)

Release: Model:

Content Type:

- LR13.1.L
- LR13.3.L
- LR14.1.L
- LR14.3.L

Search for: (Search Hints) in

Enter word or phrase, case insensitive.

'*' is the multi-character wild card. config* matches configure, Configuration.

'_' is the single character wild card. _-port matches 4-port, 6-port.

Format:

LTE End-to-End Solution

24 documents found with the specified criteria. Selected library size = 0.051 GB: (library download available at <1.5GB)

Title	Document	Issue	Issue Date	Format
9764 Metro Cell Outdoor 2x5W LTE - Technical Description - LR14.3.L	9YZ-06340-0054-DEZZA	0.05	May 22, 2015	
9764 Metro Cell Outdoor 2x5W LTE - Maintenance and Troubleshooting - LR14.3.L	9YZ-06340-0055-REZZA	0.05	May 22, 2015	
LTE Overall Documentation Plan (LODP) for LR14.3.L	LTE-DCL-APP-032875-LR14.3.L	8.03	Apr 30, 2015	
9400 LTE RAN eNodeB Macro and Metro Products - Parameters Reference Guide - LR14.1.L	9YZ-04152-0017-RKZZA	4	Apr 24, 2015	
9764 MCO V1.0 B12/B17 LTE 2x5W Product Description	BCR-FB5R-INF-041523	1.05	Apr 24, 2015	
9764 Metro Cell Outdoor 2x5W LTE - Maintenance and Troubleshooting - LR14.1.L	9YZ-04152-0055-REZZA	4	Apr 23, 2015	
LTE FDD eNodeB Product Engineering Guide (PEG) - Internal - LR14.3.L	LTE-IRC-APP-028320-LR14.3.L	9.03	Apr 21, 2015	

- Release, Model and Content Type information *dynamically displayed* when selecting criteria

- *Search Hints* provide instructions on how to perform wildcard searches after hovering over the text
- Ability to '*Create a Custom Downloadable Collection*' for documents with a size of 1.5GB or less

https://infoproducts.alcatel-lucent.com/aces/cgi-bin/au_doc_list.pl

Custom Downloadable Collection

LTE End-to-End Solution
34 documents found with the specified criteria. Selected library size = 0.135 GB: (library download available at <1.5GB)

[Create a Downloadable Collection of Filtered Documents](#)

Title	Document	Issue	Issue Date	Format
5620 SAM Network Element Compatibility Guide (5620 SAM Releases 9.0 and later)	3HE 06686 AAEE TQZZA 13	5	May 20, 2015	PDF
LTE Overall Documentation Plan (LODP) for LR14.3.L	LTE-DCL-APP-032875-LR14.3.L			
Vol. 1 - LTE and Small Cells OAM (5620 SAM and 9959 NPO) Product Engineering Guide (PEG) - Internal - LR14.3.L	LTE-IRC-APP-045837-LR14.3.L			
Vol. 2				
Vol. 3				
Vol. 4				
Vol. 5				
LTE and Small Cells OAM (5620 SAM and 9959 NPO) Customer Input Questionnaire (CIQ) in zip file - LR14.3.L	LTE-DCL-APP-045838-LR14.3.L			
Vol. 1 - LTE OAM Product Engineering Guide (PEG) - LR14.3.L and LR14.SCM	LTE-DCL-APP-045836-LR14.3.L			
Vol. 2				
5620 SAM Release 12.0 R7 LTE and SC RAN Customer Product Overview	3HE 09962 AAAA TQZZA 02			
5620 SAM LTE LR14.3 and SC LR14 Plan of Record	3HE 09696 AAAA TQZZA 02			
OAM - 5620 SAM - Product Configuration Level (PCL) - Internal - LR14.3.L	LTE-IRC-APP-044997-LR14.3.L			
5620 SAM Release 12.0 R7 Release Notice				
5620 SAM Release 12.0 R7 Scripts and Templates Developer Guide				

Select *Create a Custom Downloadable Collection*

Collection Information for LTE End-to-End Solution

Filters:
Release: LR14.3.L
Model: 5620 SAM (Service Aware Manager)

Important points to consider prior to creating the downloadable collection:


- Estimated size of your collection is: ~145,325,494 bytes
- Only those documents you are entitled to view will be included in the collection
- Customer-specific documents and downloadable archives will not be included in the zip file
- Only one document collection may be created/downloaded at a time

Click on 'Create Downloadable Collection' or 'Cancel' to return to the filter page.

[Create a Downloadable Collection](#) [Cancel](#)

From: documentation-collection@alcatel-lucent.com
To: Smotherman, Jerome (Jerry)
Cc:
Subject: Custom Downloadable Documentation Collection

Message | README.txt (3 KB)

Alcatel-Lucent 

Jerome SMOTHERMAN

You have created a custom collection of LTE End-to-End Solution documents with the following filter parameters.
Release: LR14.3.L
Model: 5620 SAM (Service Aware Manager)

The collection size is 115,157,516 bytes and may be downloaded via the following link:
https://infoproducts.alcatel-lucent.com/aces/cgi-bin/down_col.pl?col=LTE_End-to-End_Solution_2015-06-01_15:17:22.zip

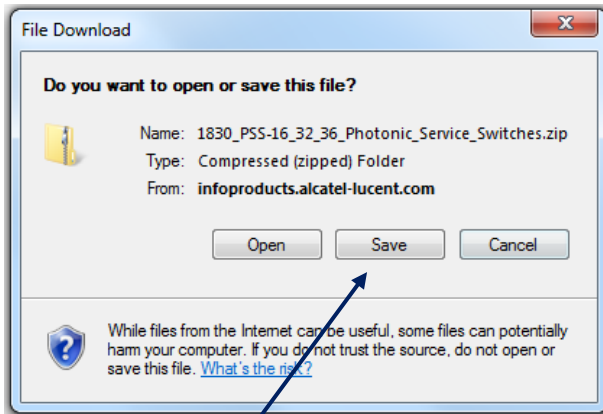
The attached README.txt file contains any filter parameters and a list of included files.
The attached Custom_Collection_PDF_Search_Instructions.pdf document contains instructions on how to search across all pdf files within the collection using Acrobat Reader.
Please note that this collection will be available for download for 48 hours and can only be downloaded by the user who generated it.

Regards,
[Alcatel-Lucent On-Line Documentation Delivery](#)

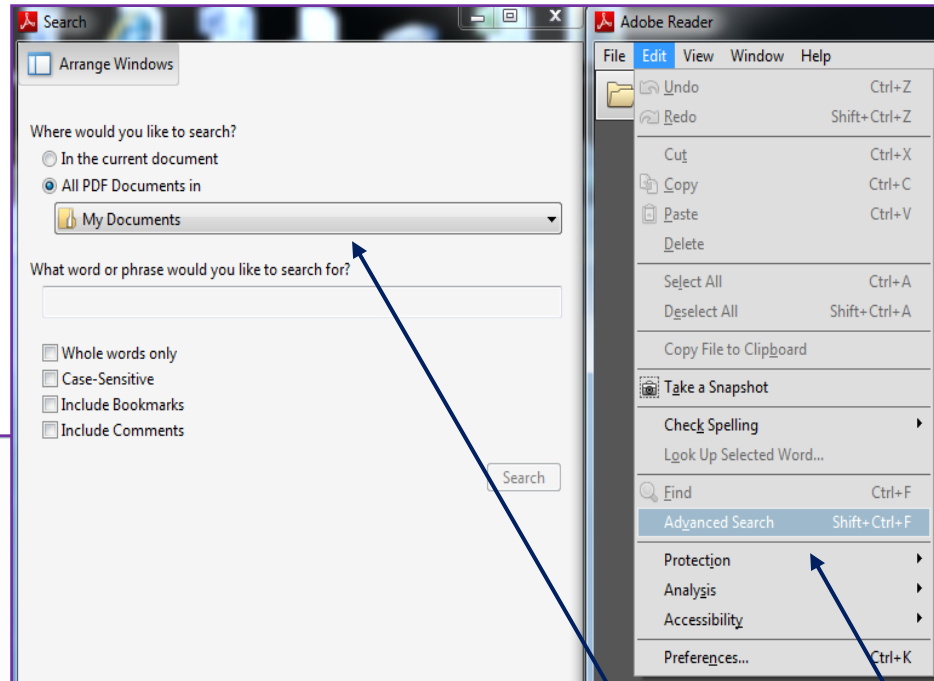
Link provided within an email and *only available* to specific customer/ALU user requesting collection

Customer-specific documents and downloadable archives not included within custom collection

Custom Downloadable Collection

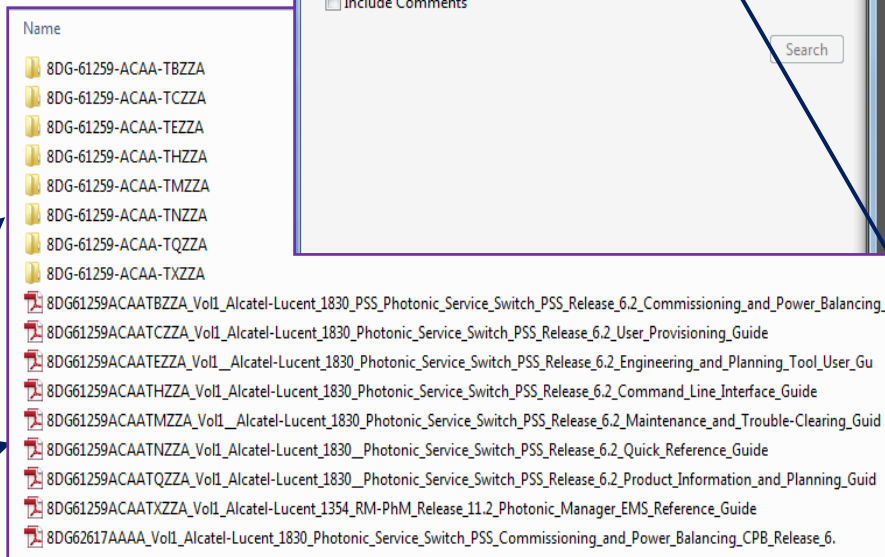


Save the Collection to your laptop



Advanced Search within Acrobat Reader enables customers to search across all PDF files within a directory

Extracted Collection can include documents in both *Webdoc* and *PDF Format*



Custom Downloadable Collection – PDF Advanced Search

The screenshot shows two windows. On the left is the 'Search' window with the following content:

Looking For:
<ip-address:comm-val>|<reg-ex1®-ex2>| in C:\tmp\5620 SAM Download

Results:
1 document(s) with 1 instance(s)

New Search

Results:

- Parameter Guide
 - type>:(<ip-address:comm-val>|<reg-ex1®-ex2>| <ip-address®-ex2>|<2byte-asnumber:ext-comm-val>| <4byte-asnumber:comm-val>)

Sort by: Relevance Ranking

Collapse file paths

[Show Fewer Options](#)

[Find a word in the current document](#)

On the right is the Adobe Reader window showing a PDF document. The document content includes:

(member)

The Community Member parameter specifies the community ID of a community member. Regular-expression matching is supported for the Community and Extended Community values.

A valid Community Member (comm-id) is entered in the following format:

<2byte-asnumber:comm-val>|<reg-ex>|<ext-comm>|<well-known-comm>

Permitted values for each component of the comm-id string are shown in Table 75-4.

Table 75-4 Community Member parameter string attributes

Component	Permitted value
2byte-asnumber	0 to 65535
comm-val	0 to 65535
reg-ex	A maximum of 72 characters
ext-comm	<type>:(<ip-address:comm-val> <reg-ex1®-ex2> <ip-address®-ex2> <2byte-asnumber:ext-comm-val> <4byte-asnumber:comm-val>) where: type = target origin ip-address = IPv4 address, in the form of x.x.x.x.x comm-val = 0 to 65535 reg-ex1 = 72 characters maximum reg-ex2 = 72 characters maximum 2byte-asnumber = 0 to 65535 ext-comm-val = 0 to 4294967295 4byte-asnumber = 0 to 4294967295
well-known-comm	null no-export no-export-subconfed no-advertise

Adobe Reader Advanced Search can successfully find terms with special characters (e.g. < > - | & :)

Clicking the Search Results takes you directly to the term within the document

Product Solution Page

The screenshot displays the 'Product Solution Page' interface. At the top, there are radio buttons for 'List Products by: My Favorites', 'All (A-Z)', 'Most Accessed', and 'Category'. The 'Most Accessed' option is selected. Below this, a list of products is shown, with '7710 SR (Service Router)' highlighted. To the right, there are search and filter controls: 'Search for: (Search Hints)' with a search box and 'Search' button; 'Model: All Models' dropdown; 'Content Type: All Types' dropdown; 'Format: PDF' dropdown (highlighted with a red box); and 'Sort: Issue Date' dropdown. A 'Reset' button is also present. Below the search controls, there is a 'Downloadable Collection of Filtered Documents' button. The main content area shows a table of documents with columns: Title, Document, Issue, Issue Date, and Format. The table lists several 'Software Release Notes' documents for the 7710 SR product, sorted by issue date.

Title	Document	Issue	Issue Date	Format
SR OS 13.0.R3 Software Release Notes	3HE09898 0003 TQZZA 01	1	May 25, 2015	PDF
SR OS 11.0.R18 Software release notes	93-0446-18 V11.0.R18	1	May 18, 2015	PDF
SR OS 12.0.R10 Software Release Notes	93-0539-010 V12.0.R10	1	May 12, 2015	PDF
SR OS 11.0.R17 Software Release Notes	93-0446-17 V11.0.R17	1	Apr 22, 2015	PDF
SR OS 13.0.R2 Software Release Notes	3HE09898 0002 TQZZA 01	1	Apr 3, 2015	PDF
SR OS 12.0.R9 Software Release Notes	93-0539-09 V12.0.R9	1	Mar 22, 2015	PDF
SR OS 11.0.R16 Software Release Notes	93-0446-16 V11.0.R16	1	Mar 13, 2015	PDF

- Ability to **List Products based on Multiple Criteria** (e.g. My Favorite Products, All Products, Most Accessed) from the results page
- Filter results based on **Format** (e.g. PDF, HTML, Zip Collection, eReader) and Sort by **Most Accessed**
- **Improved sort feature** under the Release dropdown provides a more accurate display of latest releases

Topic Finder

Filters: Add Share Manage

Access My Saved Filters

Products: My Favorites (Manage My Favorites)

Release: All Releases (dropdown menu with options: LR14.3.L, LR15.1.L, LR16.1.L)

Model: 5620 SAM (Service Aware Me)

Search for: (Search Hints) alarm management in Topics

Format: All Formats

Sort: Issue Date

Search Reset

LTE End-to-End Solution

Documentation Alerts

262 topics in 29 documents were found with the specified criteria.

Title	Document	Issue	Issue Date	Format
5620 SAM Release 14.0 R3 Applications Guide Part III: 5620 SAM applications administration 6 Assurance monitoring and troubleshooting Fault management Procedure 6-1: To create an alarm email policy Procedure 6-2: To optimize alarm event notifications	3HE 10684 AAAB TQZZA 01	1	Jun 29, 2016	PDF
5620 SAM Release 14.0 R3 Application API Developer Guide Part III: OSS domains 4 Network and service assurance Fault management OSS use cases OSS use case: Root Cause analysis and impact of an alarm	3HE 10683 AAAB TQZZA 01	1	Jun 29, 2016	PDF
5620 SAM 8950 AAA driver v1.0.0 Driver Guide (13.0 R7/R8) Discovery and management Alarms	3HE 10614 AAAA TQZZA 01	1	Dec 16, 2015	PDF

- Select **Topics** from the Search dropdown and enter the terms you are looking for (e.g. alarm management)

- Release and Model selections **Dynamically Populated** based on the search results

- **At least one topic** must be listed at the bottom of the hierarchy, or all topics if surrounded by double quotes

Note: - You must use Acrobat Reader within the Chrome, Firefox, and Internet Explorer browsers to link directly to the topic within the pdf file.

Catalog Categories

List Products by: My Favorites All (A-Z) Most Accessed Category

Most Accessed (since Apr 2015)

MCAS (Modular Convergent Application Server)
7950 XRS (eXtensible Routing System)
7710 SR (Service Router)
8620 SurePay®
8650 SDM (Subscriber Data Management)

Release: All Releases Model: All Models Search for: (Search Hints) in Title

Category: Configuration Content Type: All Types Format: PDF Sort: Issue Date

7710 SR (Service Router)
65 documents found with the specified criteria. Selected 0.131 GB: (library download available at <1.5GB)

Downloadable Collection of Filtered Documents

Title	Document	Issue	Issue Date	Format
7710 SR OS Basic System Configuration Guide 12.0.R4	93-0097-10-02	1	Jul 30, 2014	PDF
7710 SR OS Router Configuration Guide 12.0.R4	93-0082-10-02	1	Jul 30, 2014	PDF
7710 SR OS Interfaces Configuration Guide 12.0.R4	93-0081-10-02	1	Jul 30, 2014	PDF
7710 SR OS ROUTER CONFIGURATION GUIDES 12.0R1	93-0082-10-01	1	Feb 28, 2014	PDF
7710 SR OS Interface Configuration Guide 12.0R1	93-0081-10-01	1	Feb 28, 2014	PDF
7710 SR OS BASIC SYSTEM CONFIGURATION GUIDE 12.0R1	93-0097-10-01	1	Feb 28, 2014	PDF
7710 SR OS Basic System Configuration Guide 11.0r5	93-0097-09-05	1	Oct 2, 2013	PDF

Help and Feedback options:
Help with this Tool
Comments on this Interface
Documentation Comments

Reset

Added **Category** dropdown which is dynamically displayed and allows customers to search based on the content/title

Drop-down menu available for **Help and Feedback** related to the interface or specific documents

Helpful Hints

- Tips

- Use Adobe Reader XI. Earlier versions will work, but XI offers the latest features and reliable
- You must use Acrobat Reader as your pdf viewer within the Chrome, Firefox, or Internet Explorer browsers in order to link directly to topics within the content when searching by Topics.
- If the library is large, use a combination of available filters (Release, Model, Category) to reduce the set
- Sort results by Issue Date (default), Title, Document Number, or Most Accessed
- Filter results by Content Type to display 'Manuals and Guides', 'Release Information', or 'Technical Notes'
- Select 'Full Text' under the 'Search For:' section to activate the OLCS (IDOL) Search for that specific product
- Problems or suggestions with the Product Documentation interface can be submitted by selecting the 'Comments on this Interface'
- Problems or suggestions with the Product Documentation content (PDF, HTML, eReader) can be submitted by selecting 'Documentation Comments'

Helpful Hints

- eReader Format (EPUB)

- To view EPUB files on an Apple iPad mobile digital device (***Recommended***), follow these steps:Most Accessed Products
 - Obtain the free Apple iBooks application program from the Apple App Store online store
 - Connect your device to your PC or Apple Macintosh computer. RESULT: The Apple iTunes application program will start and sync with your device
 - While the device is connected to your PC or Macintosh computer and the Apple iTunes application is open, drag the EPUB file and drop it into the iTunes application window
- Viewing EPUB on PC with FireFox
 - Download EPUBReader from <https://addons.mozilla.org/en-us/firefox/addon/epubreader/> and install
 - Drag-and-drop EPUB file into Firefox
- Viewing EPUB on PC with Calibre eBook Management
 - Download Calibre from http://calibre-ebook.com/download_windows and install
 - Run Calibre, click Add book, select the EPUB file, and click View

Helpful Hints

- eReader Format (MOBI)
 - Viewing MOBI on Kindle Previewer
 - Download Kindle Previewer from <http://www.amazon.com/gp/feature.html?ie=UTF8&docId=1000234621> and install
 - Run Kindle Previewer, click File > Open Book, and select MOBI file
 - For instructions on viewing MOBI files on an Amazon Kindle device, see the Kindle Support Site at www.amazon.com
- Issues with Kindle Format
 - Only bitmap graphics can be used and only in greyscale
 - Graphics do not scale (zoom) with the text size
 - Complex tables cannot be displayed in a readable way
 - Interactivity is limited. (e.g. you cannot follow a link if your reading device does not have a cursor or a mouse pointer?)
 - eReader formats are designed for **long and linear texts**, such as novels, but not for highly structured materials